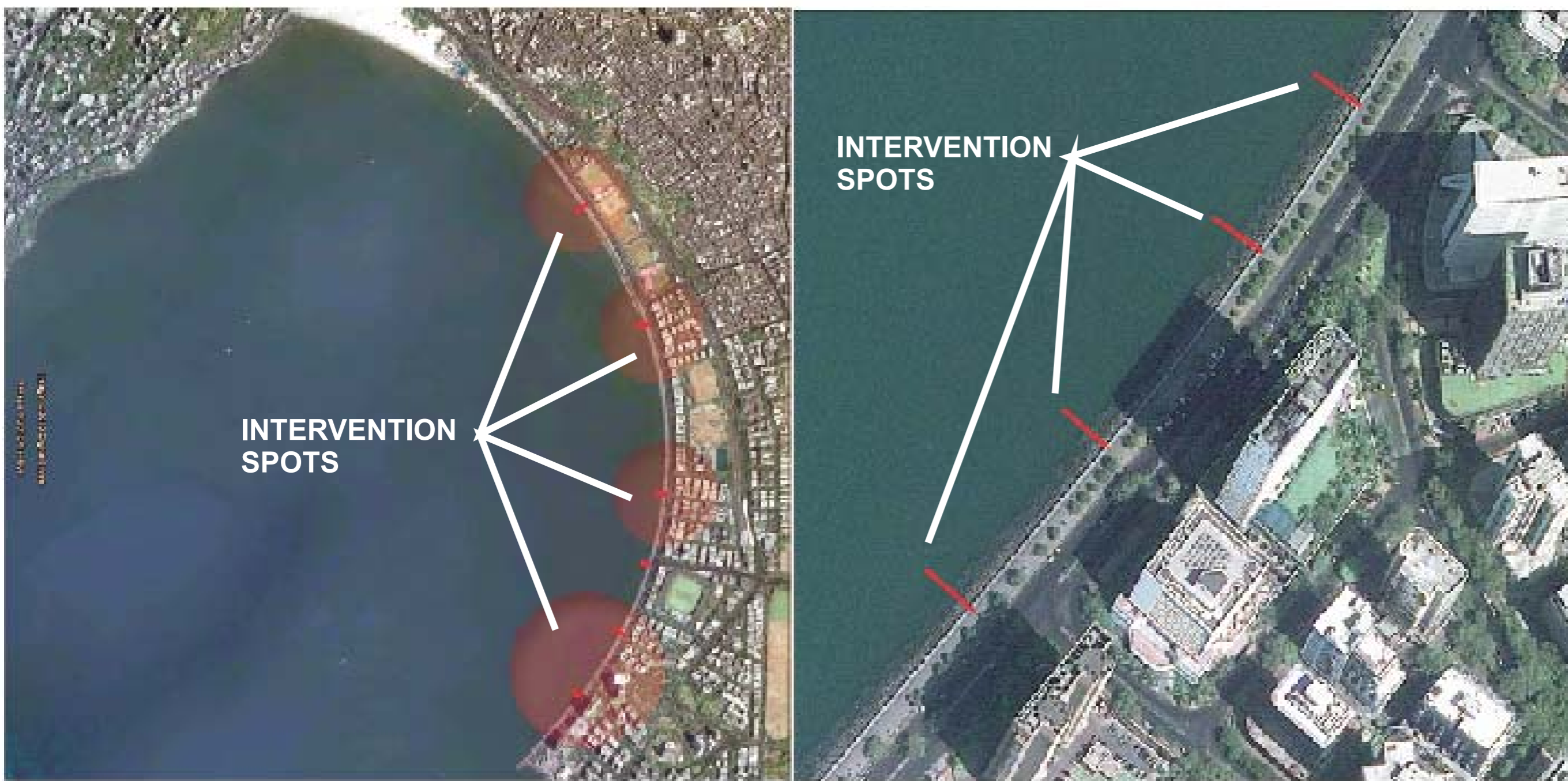


Mumbai is the capital of the Indian state of Maharashtra. It's population is around 14 and 15 million people which makes it one of the largest urban regions of the world. Mumbai is located on the west coast of India and has a deep natural harbour. The main promenade at the Arabian seafront of Mumbai is the Marine Drive which goes in a C shape from the Malabar hill to the Nariman point at the back bay. The zone is well known for being the preferred connecting road between the business district and the rest of the city. During the day it has a lot of visitors who walks, passes by, relaxes and stays in the afternoon to enjoy a beautiful sunset and to feel the fresh air coming from the sea. In order to have a better relation between the pedestrians or visitors and the water and because of the abrupt way of the connection between the sea and the promenade, we thought about developing a structure that can be temporarily and easy to assembly. In this case we designed a platform that adapts to the irregular shapes from the tetrapod wave breakers and also to the water by making a hybrid structure (buoyant, inflated and self-standing).



LOCATION VIEWS



BACKBAY VIEW



